



# MASON CITY

VisitMasonCityIowa.com | 800.423.5724 IOWA





# TABLE OF CONTENTS

<b>Full Service Meeting / Event Facilities</b>	<b>3-4</b>
<b>Limited Service Meeting / Event Facilities</b>	<b>5-6</b>
First-rate meeting facilities perfect for the small to medium size convention plus over 55,000 square feet of meeting/exhibit space and a grandstand area with seating for up to 4,500 people.	
<b>Destination Services</b>	<b>7-8</b>
It's all here! Great services and suppliers that will make your stay enjoyable and successful.	
<b>Attractions</b>	<b>9-11</b>
Award-winning attractions from puppets to prairie school architecture, museums to malls, and an assortment of music-related facilities catering to visitors.	
<b>Group Programs</b>	<b>12</b>
To further enrich your experience in Mason City these group enhancements have been selected since they "tie in" nicely with a local theme and local attractions.	
<b>Sample Itineraries</b>	<b>13-16</b>
There's a lot to see and do in Mason City... Every month of the year! Come see what makes our town so special.	
<b>Dining</b>	<b>17</b>
Mason City is home to a vast variety of dining options that cater to every palate and pocketbook.	
<b>Accommodations</b>	<b>18</b>
Stay with us! We have a great selection of attractive, comfortable, friendly and affordable properties.	
<b>City Map</b>	<b>19</b>
Mason City is as easy to navigate as it is to get to. Check out this concise map for details.	
<b>Annual Events</b>	<b>20</b>
Music, memories and events galore! A partial list of exciting events you will want to visit again and again. For detailed information about annual events and shopping in Mason City, visit <a href="http://www.VisitMasonCityIowa.com">www.VisitMasonCityIowa.com</a> .	

## MEETING EVENT SERVICES

In Mason City, we realize that coordinating an event can be an overwhelming task. That is where the partnership with Visit Mason City is invaluable! Whether you need assistance with selecting a location for off-site events, securing hotel rates, obtaining the latest information regarding hotel availability, looking for tour options for the area or if you need a formal proposal to present to members, Visit Mason City is ready, willing and able to assist you. Visit Mason City exists to ensure your success!

- Convention & Receptions Bidding
- Lodging Arrangements
- Pre-convention Counseling
- Local Transportation Arrangements
- Attendance Building Assistance
- Materials for Distribution at Registration Desk
- Community Literature (shopping, dining, maps, etc.)
- Registration Assistance
- Welcoming Address
- Spouse Programs & Tour Arrangement Assistance
- Entertainment Assistance
- Publicity Assistance
- Tourism Marketing Grant Availability

## GROUP TOUR SERVICES

Visit Mason City offers a professional group tour staff dedicated to assisting you in customizing a tour to fit your group's needs.

- Itinerary Development
- Assistance Arranging Lodging, Dining, Attractions, Entertainment
- Promotional Materials (photos, video, print, etc.)
- Escort Notes
- Community Literature (shopping, dining, maps, etc.)
- Familiarization Tours
- Hub & Spoke Tour Options



## MILES FROM MASON CITY

### Iowa Cities

Burlington, IA	249
Cedar Rapids, IA	146
Council Bluffs, IA	245
Des Moines, IA	120
Dubuque, IA	164
Iowa City, IA	164
Quad Cities, IA	223
Sioux City, IA	197
Spirit Lake/Okoboji, IA	116
Waterloo/Cedar Falls, IA	81

### Midwest Cities

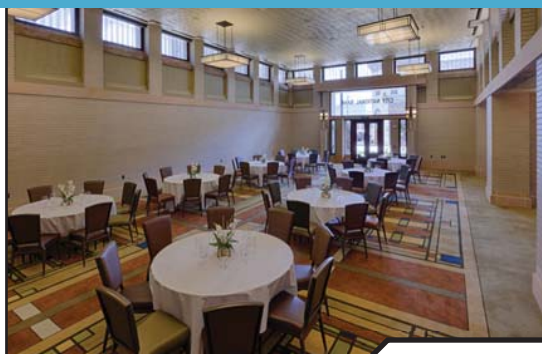
Chicago, IL	337
Fargo, ND	365
Kansas City, MO	312
Madison, WI	299
Milwaukee, WI	371
Minneapolis, MN	135
Omaha, NE	253
Rochester, MN	97
Sioux Falls, SD	207
Springfield, IL	462
St. Louis, MO	436
Wichita, KS	502



## VISIT MASON CITY

2021 4th Street SW Mason City, IA 50401  
 641-422-1663 | 800-423-5724  
[cvb@VisitMasonCityIowa.com](mailto:cvb@VisitMasonCityIowa.com)  
[www.VisitMasonCityIowa.com](http://www.VisitMasonCityIowa.com)

# FULL SERVICE MEETING / EVENT FACILITIES



## F HISTORIC PARK INN & CONFERENCE CENTER

15 West State Street  
641-424-5241 | 800-659-2220  
FAX: 641-424-3157

[www.historicparkinn.com](http://www.historicparkinn.com)

**On-Site Facilities:** 27 guest rooms; lounge and restaurant on property; full-service business center; exercise room; wireless high-speed Internet access.

**Additional Features:** on-site catering; on-site audio/visual; local limousine service; elevator; free wireless high-speed Internet access in meeting rooms; free parking.



Room Name	Square Feet	Banquet	Classroom	Reception	Theatre
Wine Room	315	12	*	12	*
Markley Room	415	32	20	32	40
Blythe Room	430	32	20	32	40
Ballroom	2400	170	100	200	200
Skylight Room	1040	*	*	40	*
Law Library	320	14	*	14	*
Lady's Parlor	150	16	*	16	*
Sample Room	215	12	*	12	*

### DID YOU KNOW...

Mason City is the hometown of Meredith Willson, well-known musician and composer who is best remembered for his long running stage and screen musical, "The Music Man". Mason City is the "River City" featured in Willson's "The Music Man". Meredith Willson also composed the holiday favorite "It's Beginning to Look a Lot Like Christmas."



# FULL SERVICE MEETING / EVENT FACILITIES



## 23 MUSE-NORRIS CONFERENCE CENTER & AUDITORIUM

North Iowa Area Community College (NIACC) Campus

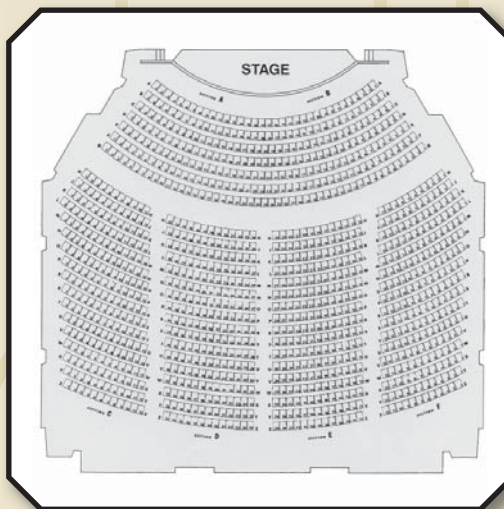
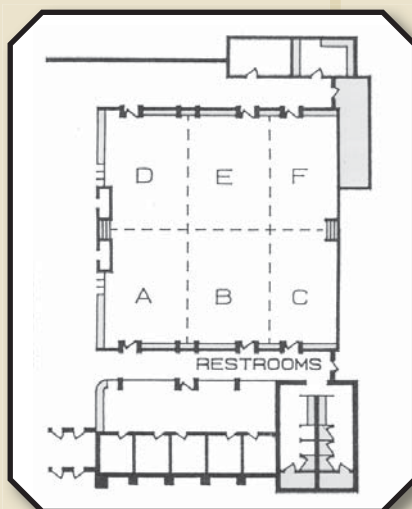
500 College Drive; Hwy. 122 East

641-422-4336 | 888-466-4222 | FAX: 641-422-4309

[www.niacc.edu/about/muse-norris-conference-center](http://www.niacc.edu/about/muse-norris-conference-center)

**On-Site Facilities:** Iowa Communications Network (ICN) site and cafeteria area.

**Additional Features:** on-site catering; on-site audio / visual; elevator; wireless high speed internet access in meeting rooms; free parking



Room Name	Square Feet	Banquet	Classroom	Reception	Theatre
180 A	600	30	24	60	40
180 B	600	30	24	60	40
180 C	600	30	24	60	40
180 D	600	30	32	60	40
180 E	600	30	32	60	40
180 F	600	30	32	60	40
Any Two Rooms	1200	60	56	115	90
Any Three Rooms	1800	90	88	175	130
Any Four Rooms	2400	150	136	230	180
All Rooms	3600	240	240	375	400
Beem Forum Auditorium	1600	*	145	*	140
Auditorium	33,312	*	*	*	1154
Activity Center	*	250	*	*	*

# LIMITED SERVICE MEETING / EVENT FACILITIES



## 22 NORTH IOWA EVENTS CENTER

3700 4th Street SW; Hwy. 122 West  
641-423-3811  
FAX: 641-423-4078  
[www.northiowaeventscenter.com](http://www.northiowaeventscenter.com)

**On-Site Facilities:** dry / dirt / ice indoor arena; 76 box horse stalls, 154 steel paneled portable horse stalls; indoor and outdoor livestock wash racks; modern restrooms/showers, concessions, over 250 camping sites 123 with electricity; sanitary dumping station; livestock barns; fenced outdoor arenas for horse events; exhibit buildings are free of obstructions and feature overhead doors/loading areas; ample parking for 4,000 plus cars; space for cargo trailer parking away from event area. **Additional Features:** portable staging; digital sign; tables; chairs; electrical drops for booth set-up and 14 sets of portable bleacher seating for 840 people and additional seating space on track for up to 1,000 people for concerts/special events using chairs and bleachers.

Room Name	Square Feet	Banquet	Classroom	Reception	Theatre	Exhibits (8x10)
Entire All Seasons Building	26,400	2,160	1,791	2,737	2,888	162
North End of All Seasons Building	11,400	910	759	1,158	1,222	68
South End of All Seasons Building	15,000	1,250	1,032	1,579	1,666	93
Olson Building	14,400	1,160	966	1,474	1,555	87
4-H Building	6,400	530	441	674	711	40
Indoor Arena (Dry Floor)	24,000	*	*	*	2,000 plus	150
Indoor Arena (Dirt Floor)	20,000	*	*	*	2,000 plus	125
Indoor Arena (Ice Floor)	17,000	*	*	*	1,650 total: 1,200 stationary bleachers; 300 portable bleachers; 150 mezzanine	*
Outdoor Area	31,725	*	*	*	bleachers available	*
Heritage I Outdoor Area	60,000	*	*	*	bleachers available	*
Heritage II Outdoor Area	41,325	*	*	*	bleachers & low covered stage available	*
Race Track	1/2 mile	*	*	*	4,500 plus additional 1,000 seats for special events	*

# LIMITED SERVICE MEETING / EVENT FACILITIES

	Number of Meeting Rooms	Banquet Style Seating Capacity (unless otherwise noted)	Unique Off-Site Reception Facility	Kitchen Facilities	Wedding Venue	Restrictions
<b>Architectural Interpretive Center</b> 530 1st St. NE   641-423-1923   <a href="http://www.stockmanhouse.org">www.stockmanhouse.org</a>	1	49 classroom style				
<b>Brick &amp; Tile Building</b>   103 E State St.   641-424-4582	1	14 boardroom style		X		Kitchen limited to small sink and refrigerator
<b>Cabin Coffee Co.</b>   1304 4th St. SE   641-423-6502 <a href="http://www.cabincoffeecompany.com">www.cabincoffeecompany.com</a>	1	16 boardroom style				Required to use on-site food service
<b>Charles H. MacNider Art Museum</b> 302 2nd St. SE   641-421-3666   <a href="http://www.macniderart.org">www.macniderart.org</a>	1	150 theatre style	X	X	X	
<b>Country Inn &amp; Suites</b>   4082 4th St. SW; Hwy 122 W 641-423-1770   <a href="http://www.countryinns.com">www.countryinns.com</a>	1	40 classroom style				
<b>Hampton Inn &amp; Suites</b>   2111 4th Street SW; Hwy 122 W 641-435-7500   <a href="http://www.hamptoninn.com">www.hamptoninn.com</a>	2	10 & 40				
<b>Hardees</b>   515 S Delaware Ave.   641-424-5395	1	20				Required to use on-site food service
<b>Holiday Inn Express</b>   3041 4th St. SW; Hwy 122 W 641-424-1200   <a href="http://www.hiexpress.com">www.hiexpress.com</a>	1	48 classroom style				
<b>Hy-Vee East Club Room</b> 551 S Illinois Ave.; Hwy 122 E   641-424-9741	1	54		X		
<b>Hy-Vee Wine &amp; Spirits</b> 2400 4th St. SW; Hwy 122 W   641-424-2605	1	40				
<b>Knights of Columbus Hall</b>   551 S Taft Ave.   641-423-8641	1	230		X	X	
<b>Lime Creek Nature Center</b>   3501 Lime Creek Rd.; Hwy 65 N 641-423-5309   <a href="http://www.limecreeknature.org">www.limecreeknature.org</a>	1	120	X	X		Environmental / conservation presentation or tour required
<b>Mason City Brewing</b>   28 E State St.   641-423-1080 <a href="http://www.masoncitybrewing.com">www.masoncitybrewing.com</a>	1	50	X			
<b>Mason City Community Theatre</b>   215 S Delaware Ave. 641-424-6424   <a href="http://www.mccommunitytheatre.com">www.mccommunitytheatre.com</a>	1	138 theatre style	X			
<b>Mason City Country Club</b>   3331 19th St. SW 641-424-3014   <a href="http://www.masoncitycountryclub.com">www.masoncitycountryclub.com</a>	3	20, 80 & 220	X		X	Required to use on-site food service
<b>Mason City Public Library</b> 225 2nd St. SE   641-421-3668   <a href="http://www.mcpl.org">www.mcpl.org</a>	6	80 banquet; 120 theatre 40, 20, 15, 6 & 6 classroom style		X		No alcohol permitted
<b>Moose Lodge #1328</b>   22 4th St. NW   641-423-1873	1	196		X	X	Alcohol provided by the Lodge only
<b>National Guard Armory</b>   1160 19th St. SW   641-423-9311	5	24, 50, 50, 125, & 350			X	
<b>North Iowa Youth Center</b> 138 5th St. SW   641-423-1883   <a href="http://www.niayouthcenter.com">www.niayouthcenter.com</a>	1	100				Kitchen limited to refrigerator
<b>Pizza Ranch</b>   1617 S Monroe Ave.   641-423-3100	3	84, 40, & 30	X		X	Required to use on-site food service
<b>Prime 'N Wine</b>   3000 4th St. SW; Hwy 122 W 641-424-8153   <a href="http://www.primenwine.com">www.primenwine.com</a>	3	30, 60, & 300 or divide room with seating for 100 per side	X		X	Required to use on-site food service
<b>Senior Activity Center Reception Hall</b> 326 4th St. NE   641-423-1502	1	300		X	X	No alcohol permitted
<b>Stebens Community Theatre</b> 616 N Delaware Ave.   641-424-9802   <a href="http://www.stebens.com">www.stebens.com</a>	1	97 theatre style	X			
<b>The Bridge at Grace Church</b>   440 N. Illinois   641-423-49401	2	40 & 60	X		X	Required to use on-site food service
<b>The Decker House</b>   119 2nd St. SE   641-423-4700	2	12 & 12				Required to use on-site food service
<b>The Main Event</b> 112 2nd St. SE   641-425-0363   <a href="http://www.themaineventmc.com">www.themaineventmc.com</a>	1	136		X		Catering kitchen with refrigerator and freezer. Alcohol provided by the venue only.
<b>The Music Man Square</b>   308 S Pennsylvania Ave. 641-424-2852   <a href="http://www.themusicmansquare.org">www.themusicmansquare.org</a>	3	130, 300, & 350	X	X	X	
<b>The Quarry</b>   10 S Federal Ave.   641-421-0075	1	49	X			Required to use on-site food service
<b>VFW</b>   1603 S Monroe Ave.   641-424-3874	2	40 & 150			X	
<b>Village Court Family Restaurant</b> 687 S Taft Ave.   641-424-5065	1	75				Required to use on-site food service



# DESTINATION SERVICES



## **CATERERS**

Butcher's Steakhouse  
641-423-1110

Cabin Coffee Co.  
641-423-6502

Carlos O'Kellys  
641-423-9332

Hungry Mind  
641-423-0121

Hy-Vee East  
641-424-9741

Hy-Vee West  
641-424-2605

Jimmy John's  
641-424-8004

Mason City Country Club  
641-424-3014

Pies & More  
641-424-2166

Prime 'N Wine  
641-424-8153

Rib Crib  
641-424-3704

Ruby Tuesday  
641-424-9990

State Street Deli  
641-201-1002

The Quarry  
641-421-0075

## **AIRLINE SERVICE**

Mason City Municipal Airport  
641-421-3680  
[www.flymcw.com](http://www.flymcw.com)

North Iowa Air Service  
641-424-9366

[www.northiowaair.com](http://www.northiowaair.com)

Air Choice One  
866-435-9847  
[www.AirChoiceOne.com](http://www.AirChoiceOne.com)

## **AUTOMOBILE RENTAL**

Enterprise  
2740 4th St. SW  
641-423-8300 | 800-766-8222  
[www.enterprise.com](http://www.enterprise.com)

## **LIMOUSINE SERVICE**

HPI Limousine Service  
641-422-0015

Odyssey Limousine  
641-423-4644

## **SHUTTLE SERVICE**

Cerro Gordo Public Transit  
(County bus system/charter service)  
641-423-2262

Mason City Transit  
(City bus system)  
641-423-3616

North Iowa Bus Service  
(Charter service)  
641-424-2600 | 800-553-5416

## **TAXI SERVICES**

A-I Taxi River City Inc.  
641-424-4265

Call-A-Cab  
641-210-5088

Express Taxi  
641-423-4167

## **DISPOSAL STATIONS**

Margaret MacNider Campground  
901 N Birch Drive  
641-421-3673 | 641-421-3679

North Iowa Events Center  
Corner of Eisenhower Ave & Hwy 122 W  
3700 4th St SW | 641-423-3811  
[www.northiowaeventscenter](http://www.northiowaeventscenter)

## **DIESEL SERVICE**

Cenex Ampride  
504 1st St. SW | 641-423-7486

Fleet Farm Gas  
326 4th St. SW; Hwy 122 W  
641-423-4474

Hy-Vee Gas  
1503 4th St. SE | 641-423-0699

Cenex  
426 4th St. SW | 641-423-9345

Walmart Gas Station  
4059 4th St. SW; Hwy 122 W  
641-424-5748

## **AUDIO / VISUAL EQUIPMENT**

Higgins Pro Audio  
520 7th St. SE | 641-423-6690

Mason City RentAll  
518 S Pennsylvania Ave.  
641-424-4949  
[www.mcrentall.com](http://www.mcrentall.com)

Mason City Rent-A-Center  
2458 4th St. SW | 641-494-2488  
[www.rentacenter.com](http://www.rentacenter.com)



# DESTINATION SERVICES



## **PRINTER / COPY CENTERS**

Community Quick Print  
19 8th St. SE | 641-424-4342

Control Print  
524 N Federal Ave. | 641-210-4000

Dimensional Graphics  
325 N Jackson Ave. | 641-423-8931

Globe Gazette  
300 N. Washington Ave. | 641-421-0500

Larson Printing Co.  
714 S Delaware Ave. | 641-424-2623

PostNet  
451 Indianhead Dr. | 641-423-1980

Staples  
3440 4th St. SW; Hwy 122 W  
641-423-4012

Storey Kenworthy  
1401 S Harrison Ave. | 641-424-8920

## **AWARDS, TROPHIES, SIGNS & NAMETAGS**

D & D Printing & Custom Signs  
840 12th St. NW  
641-423-9487 | 800-325-5308

Fairway Outdoor  
1233 N Federal Ave. | 641-424-4173

Jensen Neon Sign Co.  
427 N Georgia Ave. | 641-423-6123

Johnson Sign Service  
1019 17th NE | 641-423-1487

Larson Signs  
838 4th St. SE | 641-423-4439

LeDoux Signs  
1409 S Federal Ave. | 641-424-6464

Sign Pro  
1803 S Pierce Ave.  
641-424-2122 | 800-873-2814

Signcraft of Iowa  
902 N. Federal Ave. | 641-423-4200

Trophies Unlimited  
524 N Federal Ave. | 641-423-5105

## **RENTAL SERVICE**

Aaron's  
3701 4th St. SW | 641-423-0450

Mason City RentAll  
518 S Pennsylvania Ave. | 641-424-4949  
[www.mcrentall.com](http://www.mcrentall.com)

## **FLORAL / DECORATIVE SUPPLIES**

Baker Floral  
923 4th St. SW | 641-424-3661  
[www.bakerfloral.com](http://www.bakerfloral.com)

Hy-Vee East  
551 East Illinois | 641-424-8445  
[www.hy-vee.com](http://www.hy-vee.com)

Hy-Vee West  
2400 4th SW; Hwy 122 W  
641-424-2605  
[www.hy-vee.com](http://www.hy-vee.com)

Hobby Lobby  
2566 4th SW; Hwy 122 W  
641-423-5100

Martin Brothers Food Market  
711 S Federal Ave. | 641-423-2325  
[www.martinsnet.com](http://www.martinsnet.com)

Otto's Oasis  
30 E State St. | 641-424-7070  
[www.ottosoasis.com](http://www.ottosoasis.com)

## **MEDIA**

Alpha Media  
341 S Yorktown Pike | 641-423-1300

Globe Gazette  
300 N Washington Ave. | 641-421-0500

KCMR 97.9 FM Radio  
600 1st St. NW | 641-424-9300

KIMT -TV  
112 N Pennsylvania Ave.  
641-423-2540

Mediacom Cable Services  
Hwy 122 W | 800-332-0245

North Iowa Broadcasting  
31 1st St. NE | 641-421-7744

## **GOLF COURSES**

Highland Park Municipal Golf Course  
18-Hole course  
944 17th St. NE | 641-423-9363

Mason City Country Club  
18-Hole course  
3331 19th St. SW | 641-424-3014

North Iowa Golf Center  
Outdoor Miniature Golf / Driving Range  
4450 4th St. SW | 641-424-2244

Off Season Indoor Golf  
Virtual Golf  
1104 N Federal Ave. | 641-423-4653

Pine Creek Golf Course  
9-Hole, par 30 course  
Hwy 65 N | 641-423-6831

DID YOU KNOW...

Mason City is the boyhood home of Bil Baird, master puppeteer. The largest collections of his work, including the marionettes featured in "The Sound of Music", are on display at the Charles H. MacNider Art Museum.



# MASON CITY ATTRACTIONS



## 7 Cannonball 457

East Park, East State St. | Mason City, IA 50401

641-423-5328 | [www.friendsofthe457.org](http://www.friendsofthe457.org)

Built in 1912, this last remaining Minneapolis & St. Louis Railway steam locomotive – No. 457, the “Cannonball” has been restored to reflect its appearance in the late 1920’s.

**Hours:** May– Oct.: Sat. & Sun., 1pm-5pm; or by appointment.

**Admission:** Free

**Group Tour Size:** 10 minimum, 55 maximum

**Guided Tour Available:** yes, reservations required (4-week notice)

**Length of Tour:** 45 min. average **Handicap Accessible:** no

**Motorcoach Parking:** yes **Restroom Facilities:** yes

Mason City is also home to Iowa Traction Railroad, the only remaining organization that still uses electric locomotives to haul freight in regular service in the United States. Visitors can see an electric freight-hauling locomotive in operation on almost any day while traveling along 19th Street SW / County Road B35.

## 5 Charles H. MacNider Art Museum

303 2nd St. SE | Mason City, IA 50401

641-421-3666 | [www.macniderart.org](http://www.macniderart.org)

A North Iowa cultural treasure, the museum includes a permanent collection of American art, the famous Bil Baird puppets, and an impressive range of ceramics. Genuinely an active center for the Arts, the museum offers changing exhibits, films, studio classes, special events, and a museum gift shop.

**Hours:** Wed., Fri. & Sat. 9am–5pm; Tues. & Thurs. 9am–8pm

**Admission:** Free for self guided tour; \$5 per person for scheduled guided tour. Complimentary admission for driver and escort for groups of 25 or more.

**Group Tour Size:** 10 minimum, 55 maximum

**Guided Tour Available:** yes, reservations required (4-week notice)

**Length of Tour:** 60 min. average **Handicap Accessible:** yes

**Motorcoach Parking:** yes **Restroom Facilities:** yes, limited

## 8 Frank Lloyd Wright's Historic Park Inn Hotel

15 West State Street | Mason City, IA 50401

tour information: 641-423-0689 | [www.wrightonthepark.org](http://www.wrightonthepark.org)

Tour the only remaining hotel designed by Frank Lloyd Wright. Originally opened in 1910 as the City National Bank and Park Inn, the building now functions as a 27-room boutique hotel following its extensive restoration/rehabilitation which was completed in 2011. Stop by the Wright on the Park Headquarters for exhibits and unique gifts, located on the downtown plaza at 17 S. Federal Avenue.

**Hours:** Thurs. & Fri. 11:30am & 1:00pm; Sat. 11:30am; Sun. 11:30am & 1:00pm; or by appointment 11:30am - 3pm for groups 10 or more.

**Admission:** \$10 per person; \$8 per person groups 25 or more; complimentary admission for driver and escort for groups.

**Group Tour Size:** 10 minimum, 55 maximum.

**Guided Tour Available:** yes, reservations required (2-week notice)

**Length of Tour:** 60 min. average **Handicap Access:** yes

**Motorcoach Parking:** yes, off-site **Restroom Facilities:** yes

DID YOU KNOW...

Mason City is home to the largest group of Prairie School designed homes on a unified site and the location of the first and only Prairie School house in Iowa designed by Frank Lloyd Wright.

## 9 Frank Lloyd Wright Stockman House & Robert E. McCoy Architectural Interpretive Center

530 1st St. NE | Mason City, IA 50401

641-423-1923 | [www.stockmanhouse.org](http://www.stockmanhouse.org)

Constructed in 1908, the Stockman House is the only Frank Lloyd Wright-designed Prairie Style house in Iowa that is open to the public. Tours begin at the Architectural Interpretive Center (next door) which features a photo gallery of the Prairie School Homes in the in Rock Crest / Rock Glen Historic District by Wright's associates, as well as a gift shop of Wright-inspired items. **Large group tours available by appointment. Tour requests should be made online at [www.stockmanhouse.org](http://www.stockmanhouse.org)**

**Admission:** \$10 adults, \$5 Youth 12-17, \$2 Children 11 & under (not suitable for children under the age of 5).

**Group Tour Size:** 10 minimum, 45 maximum

**Guided Tour Available:** yes, reservations required (2-week notice)

**Length of Tour:** 90 min. average

**Handicap Accessible:** first floor only

**Motorcoach Parking:** yes **Restroom Facilities:** yes

## 10 Kinney Pioneer Museum

Municipal Airport; Hwy. 122 West | Mason City, IA 50401

641-423-1258

Experience life on the Iowa frontier through the vintage exhibits and living history at the museum. Visit a pioneer village with a one-room schoolhouse, log cabin, old jail, blacksmith shop. Demonstrations of pioneer crafts and trades during special event days. Call ahead for schedule.

**Hours:** May – September Tues.–Sun. 1pm-5pm; other times by appointment

**Admission:** \$3 adults; \$1 children under 12; complimentary admission for driver and escort for groups of 25 or more

**Group Tour Size:** 10 minimum, 45 maximum

**Guided Tour Available:** yes, reservations required (2-week notice)

**Length of Tour:** 90 min. average **Handicap Accessible:** yes

**Motorcoach Parking:** yes **Restroom Facilities:** yes

# MASON CITY ATTRACTIONS



## 11 Lime Creek Nature Center

3501 Lime Creek Rd; Hwy 65 N | Mason City, IA 50401  
641-423-5309 | [www.co.cerro-gordo.ia.us](http://www.co.cerro-gordo.ia.us)

Nestled atop the limestone bluffs of the Winnebago River and located on 440-acres of diverse natural habitat, the Center is a prime destination for nature lovers. Captivating displays and unique wildlife mounts highlight the natural resources of North Iowa. Nine miles of trails and virtual geocaching is available. A visit to Lime Creek will begin with a tour of the Nature Center. Nature Center staff can provide programming with a variety of topics available including Iowa wildlife, bird feeding & watching, Iowa habitats, and more.

**Hours:** Mon- Fri. 7:30am-4pm; Sat. 9am-5pm, Sun. 1pm-5pm; winter weekends close at 4pm; closed holidays.

**Admission:** Free for main tour

**Group Tour Size:** 10 minimum, 50 maximum

**Guided Tour Available:** yes, reservations required (2-week notice)

**Length of Tour:** 45 min. average **Handicap Accessible:** yes

**Motorcoach Parking:** yes **Restroom Facilities:** yes, limited

## 31 Meredith Willson Boyhood Home & The Music Man Square

18

308 S. Pennsylvania Ave. | Mason City, IA 50401  
641-424-2852 | 866-228-6262 | [www.themusicmansquare.org](http://www.themusicmansquare.org)

The Music Man Square features a 1912 streetscape with an ice cream parlor and gift shop, all in set designs recreated from the Warner Bros. motion picture *The Music Man*. Interactive museum highlights Meredith Willson memorabilia and music-related exhibits and exploratorium. Plus, visit the restored 1895 modified Queen Anne house that was Meredith Willson's birth place and boyhood home.

**Hours:** April-December, Tues.-Sun. 1-5 p.m.

Jan.-Mar., Tues.-Sat. 1-5 p.m. Closed Mon. & holidays.

**Admission:** \$10 adults, \$5 students. Includes both The Music Man Square & Willson Home.

**Group Tour Size:** 10 minimum

**Guided Tour Available:** yes, reservations required (1-week notice)

**Length of Tour:** 2 hours average

**Handicap Accessible:** yes; first floor only of Willson House

**Motorcoach Parking:** yes **Restroom Facilities:** yes

## 14 Mason City Community Theatre

215 S Delaware Ave. | Mason City, Iowa 50401  
641-424-6424 | [www.mccommunitytheatre.com](http://www.mccommunitytheatre.com)

You'll applaud the talents of local thespians as they take the stage in our downtown theatre, with seating for up to 138 people. Performances are generally held in October, February, April and June.

**Hours:** Thurs., Fri. and Sat. 7pm; Sun. 2pm week of show

**Admission:** \$14 for general shows, \$16 for musicals;

Large Group (25-60) discount \$1 per person and complimentary admission for driver and escort with purchase of 25 tickets. Reservations required 30 days before performance date. Ticket release date 30 days before performance date

**Usher Service:** yes **Length of Show:** 2 hours average

**Handicap Accessible:** yes **Motorcoach Parking:** yes

**Restroom Facilities:** yes

## 23 North Iowa Performing Art Series

North Iowa Area Community College (NIACC) Auditorium  
500 College Dr. | Mason City, IA 50401

641-422-4188 | 888-466-4222 ext. 4188 | [www.niacc.edu](http://www.niacc.edu)

Mason City is fortunate to host some of the greatest performances, presented in the comfortable atmosphere of the North Iowa Community Auditorium with seating capacity for 1,158 guests. The entertainment lineup offers something for everyone including national touring productions featuring cultural dancing, award winning musicals, motivational speakers, and holiday events for the entire family.

**Hours:** Performance times vary, please contact ticket office for more information.

**Admission:** Prices vary, minimum of 20 tickets for large groups (25-100). No refunds or exchanges; 10% deposit due at the time of reservation or within 2 weeks after reservation date with balance due 30 days before the performance date. Comp admission for driver and escort with purchase of 25 tickets. Ticket release date is 30 days before performance date.

**Usher Service:** yes, reserved seating available

**Length of Show:** 2.5 hours average **Handicap Accessible:** yes

**Motorcoach Parking:** yes **Restroom Facilities:** yes, limited

## Stebens Children's Theatre

616 N Delaware Ave. | Mason City, IA 50401  
641-424-9802 | [www.stebens.com](http://www.stebens.com)

Delight in the productions designed to be enjoyed by groups of all ages performed by the talented youth of the community. The theatre seats up to 97 people and provides an intimate performance atmosphere offering the audience a remarkable experience. Performances are generally held September – June.

**Hours:** Performance times vary, behind the scenes tour available after the performance.

**Admission:** \$11 adults and \$8 for children 18 and under; \$1 off ticket prices with purchase of 25 tickets; complimentary admission for driver and escort with purchase of 25 tickets; ticket release date is 30 days before performance date

**Usher Service:** yes, reserved seating available

**Length of Show:** 1.5 hours average; 30 min. for tour

**Handicap Accessible:** yes

**Motorcoach Parking:** yes **Restroom Facilities:** yes, limited

DID YOU KNOW...

The Colby car was manufactured in Mason City in 1911, one of the few remaining vehicles is displayed at the Kinney Pioneer Museum.



# AREA ATTRACTIONS



## DID YOU KNOW...

Frank Lloyd Wright designed six hotels in his lifetime. Only one remains - the Historic Park Inn Hotel located in downtown Mason City, Iowa.

## Central Gardens of North Iowa

N. 8th St. & 2nd Ave. N. | Clear Lake, IA 50428

641-357-0700 | [www.central-gardens.org](http://www.central-gardens.org)

This 2.75 acre space is home to 22 theme gardens including Rose, Wetland, Butterfly, Shade and more. Also included are water features, terraces, a pavilion, and the Moongate Theatre Steps.

**Hours:** April-October. Dawn to Dusk

**Admission:** Free for self guided tour; \$1 per person for scheduled guided tour. Complimentary admission for driver and escort for groups of 25 or more.

**Group Tour Size:** no minimum or maximum

**Guided Tour Available:** yes, reservations required (1-week notice)

**Length of Tour:** 60-90 minutes **Handicap Accessible:** yes

**Motorcoach Parking:** yes **Restroom Facilities:** yes, limited

## Cerro Gordo County Wind Farm

10586 Balsam Ave., S14 South | Ventura, IA 50482

NextEra Energy Resource's Cerro Gordo wind farm consists of 55 wind energy turbines. The wind farm outdoor viewing area is located 5 miles south of Ventura, Iowa on S14.

**Hours:** Outdoor viewing area open to public, escort notes available.

**Admission:** Free

## Clear Lake Arts Center

17 South 4th Street | Clear Lake, IA 50428

641-357-1998 | [www.clartscenter.com](http://www.clartscenter.com)

The gallery showcases regional artists, changing exhibits, and art-related gifts.

**Hours:** Tues-Sat. 10am-5pm **Admission:** Free

**Group Tour Size:** no minimum, 75 maximum

**Guided Tour Available:** yes, reservations required (2-week notice)

**Length of Tour:** 45 min. average **Handicap Accessible:** yes

**Motorcoach Parking:** yes **Restroom Facilities:** yes

## Clear Lake Fire Museum

112 North 6th Street | Clear Lake, IA 50428

641-357-2613 | [www.clearlakefire.com](http://www.clearlakefire.com)

Resembling a 1920's fire station, visitors will step back in time to the early days of firefighting. The first fire museum in the State of Iowa - the facility houses a great collection of photographs, mementos and antique equipment.

**Hours:** Memorial Day-Labor Day: Saturday-Sunday 1pm-4pm.

or by appointment **Admission:** Free will donation

**Group Tour Size:** no minimum, 75 maximum

**Guided Tour Available:** yes, reservations required

**Length of Tour:** 45 min. average **Handicap Accessible:** yes

**Motorcoach Parking:** yes **Restroom Facilities:** yes, limited

## Diamond Jo Casino

777 Diamond Jo Lane | Northwood, IA 50459

641-323-7777 / 877-323-5566 | [www.diamondjo.com](http://www.diamondjo.com)

Located at Iowa Exit 214 on I-35. Featuring over 990 reel and video slot machines, including 29 tables - craps, black jack, roulette, pai gow poker and four restaurants.

**Hours:** Open 24 hours **Admission:** Free

**Group Tour Size:** no minimum or maximum

**Guided Tour Available:** yes **Length of Tour:** 4 hours minimum

**Handicap Accessible:** yes **Motorcoach Parking:** yes

**Restroom Facilities:** yes

## Lady of the Lake

Seawall, Downtown Clear Lake | 641-357-2243 | [www.cruiseclearlake.com](http://www.cruiseclearlake.com)

Come aboard and cruise beautiful Clear Lake on a picturesque paddle wheel. Catering available.

**Hours:** Late May through September. Check website or call for up-to-date cruise schedule, special events, private charter times, and dinner cruise options.

**Admission:** \$14 adults; \$16 dessert cruise, \$25 cruise & meal

**Group Tour Size:** 30 minimum, 150 maximum

**Guided Tour Available:** yes, reservations required (2-week notice)

**Length of Tour:** 90 min. average for general excursion

**Handicap Accessible:** yes, lower deck only

**Motorcoach Parking:** yes **Restroom Facilities:** yes, limited

## Surf Ballroom & Museum

460 N. Shore Dr. | Clear Lake, IA 50428

641-357-6151 | [www.surfballroom.com](http://www.surfballroom.com)

"The day the music died." The final concert site of Buddy Holly, Ritchie Valens and J.P. "The Big Bopper" Richardson and one of the last remaining ballrooms in the Midwest. Located less than a block to the west of the Surf Ballroom is Three Stars Plaza which features a central art sculpture honoring the rock and roll icons. The feature is especially striking at night when the neon lights glow.

**Hours:** Mon.-Fri. 8am-4pm; Memorial Day-Labor Day: Mon.-Fri., 8am-4pm; Sat., 9am-1pm; Sun. 1pm-4pm or by appointment.

**Admission:** \$5 suggested donation; \$8 per person for narrated tour & video; additional \$1 per person includes snack.

Complimentary admission for driver and escort for groups of 30 or more.

**Group Tour Size:** 30 minimum, 95 maximum

**Guided Tour Available:** yes, reservations required (2-week notice)

**Length of Tour:** 75 min. average **Handicap Accessible:** yes

**Motorcoach Parking:** yes **Restroom Facilities:** yes, limited

## Winnebago Industries

1045 S. 4th St. | Forest City, IA 50436

641-585-6936 | [www.winnebagoind.com](http://www.winnebagoind.com)

Enjoy an informational tour through the world's largest motor home production complex. During a tour of this facility, visitors will get a bird's eye view of the facility while witnessing the manufacturing of these popular recreational vehicles. Staircases at plant tour includes approximately 40 steps.

**Hours:** April - Oct. Mon-Fri. 9am & 1 pm. **Admission:** Free

**Group Tour Size:** 10 minimum, 55 maximum

**Guided Tour Available:** yes, reservations required (2-week notice)

**Length of Tour:** 90 min. minimum **Handicap Accessible:** no

**Motorcoach Parking:** yes **Restroom Facilities:** yes, limited

# GROUP PROGRAMS



## Architectural Presentation / Tour

Interested in viewing the interior of the Prairie School style homes that are owned by local residents? The architectural power point presentation, held at the Charles H. MacNider Art Museum, is the perfect way to see the inside and also view historical photos of each Prairie School style home located in the community. Plus, the presentation includes historical information and photos regarding The Historic Park Inn Hotel and the City National Bank, both designed by Wright. In addition, the show explains Frank Lloyd Wright's design style and other recognizable features of the Prairie School design. Special tour features include information about Wright's designed Prairie School residential home, bank building and the only remaining hotel in the world designed by Wright – all located in Mason City, Iowa! Plus, learn the colorful details about the Rock Glen and Rock Crest area, the largest collection of Prairie School style homes on a unified site, and the leaders who made the neighborhood what it is today. If the group would like to view the exteriors of many of the homes featured in the slide show presentation, a 3 ½ block walking tour can be provided of the Rock Glen / Rock Crest area or the guide can board the coach to provide a brief overview of the area.

**Hours:** Tues., Wed., Fri. & Sat. 9am–5pm; Thurs. 9am–9pm

**Admission:** \$5 per person for the presentation and/or architectural tour; complimentary admission for driver and escort for groups of 25 or more

**Group Tour Size:** 10 minimum, 50 maximum

**Guided Tour Available:** yes, reservations required (4-week notice)

**Length of Tour:** 30 minutes minimum for slide show and an additional 30 minutes for walking tour

**Handicap Accessible:** yes **Motorcoach Parking:** yes

**Restroom Facilities:** yes, limited

## City Tour

Uncover the story about Mason City's past, present and future on this informational city tour of the community. The tour also includes interesting facts and trivia about Mason City. The tour is provided aboard the coach. **PLEASE NOTE: To help keep the element of surprise, City Tours are not available for Mystery Tours.**

**Hours:** Mon.– Fri. 8am – 5pm

**Admission:** \$3 per person for volunteer guide encouraged

**Group Tour Size:** 25 minimum, 50 maximum

**Guided Tour Available:** yes, reservations required (4-week notice)

**Length of Tour:** 45 minutes average

## Ice Cream Treat

Enjoy a tasty treat at the Ice Cream Parlor located in The Music Man Square along the beautiful indoor 1912 streetscape that is a replica of the set designs from the movie, "The Music Man".

**Hours:** Tues.–Sun. 1pm–5pm

**Admission:** Prices range from \$2.00 to \$4.00 per person

**Group Tour Size:** 10 minimum, 80 maximum

**Guided Tour Available:** yes, reservations required (1-week notice)

**Length of Tour:** 30 minutes average **Handicap Accessible:** yes

**Motorcoach Parking:** yes **Restroom Facilities:** yes

## Mason City Brewing

See the first brewery in Mason City in 130 years when touring Mason City Brewing. This brewery offers a variety of quality craft beers brewed on-site. Stimulate your senses and satisfy your curiosity as you explore the brewing process from grain to glass. Discover your new favorite beer with a complimentary pint of beer provided for each tour guest.

**Hours:** Mon.–Sun. 8am–8pm **Admission:** \$5 per person;

complimentary admission for driver and escort for groups of 25 or more

**Group Tour Size:** 10 minimum, 60 maximum

**Guided Tour Available:** yes, reservations required (2-week notice)

**Length of Tour:** 30 minutes average

**Handicap Accessible:** yes **Motorcoach Parking:** yes

**Restroom Facilities:** yes, limited

## Musical Entertainment

Delight in a musical performance by local talent.

**Hours:** Hours vary depending on needs of your group

**Group Admission:** \$150–\$500

**Group Tour Size:** 30 minimum, 350 maximum

**Guided Tour Available:** yes, reservations required (8-week notice)

**Performance Length:** 30 min. minimum, 75 min. maximum

## Musical Revue Theatre Performance

Delight in a performance featuring highly trained and talented high school aged performers. All are "award-winning" All State Singers with many involved in more than fifteen productions and attended theatre classes for five or more years. The musical revues are designed to appeal to family and senior audiences with the production changing each September and running until the following August. The performance can be held at the Stebens Children's Theatre (seating 97) or at any site which can accommodate a performance space of 10 ft. deep by 15 ft. wide. The revue tours with its own colorful set, sound system and lights. Past shows include "The Andrews Sisters", "Smoke On the Mountain", "Oil City Symphony" and "Abby and the Absoluties".

**Hours:** Mon.–Sun. 8am–10pm

**Group Admission:** \$390 at Stebens Children's Theatre;

\$495 plus mileage for other venues

**Group Tour Size:** 20 minimum, 500 maximum

**Guided Tour Available:** yes, reservations required (6-week notice)

**Performance Length:** 60 minutes average

## North Iowa Area Community College Agricultural Tour

This state of the art agronomic demonstration center, located on the North Iowa Community College (NIACC) campus, showcases transgenic crops, chemical demonstrations, specialty crops, global positioning systems, geographic information systems, yield mapping and monitoring, and swine/beef production facilities.

**Hours:** May – Sept. Mon.–Fri. 8am–5pm **Admission:** Free

**Group Tour Size:** 10 minimum, 90 maximum

**Guided Tour Available:** yes, reservations required (8-week notice)

**Length of Tour:** 60 min. minimum, 180 min. maximum

**Handicap Accessible:** no **Motorcoach Parking:** yes

**Restroom Facilities:** no



## Picnic Style Barbecue

Enjoy an old fashioned barbecue at the scenic Lime Creek Nature Center or one of the many beautiful parks in the community.

**Hours:** May- Sept. Mon.-Sun. 5pm-9pm

**Admission:** Ranges depending on menu; avg. \$5 - \$10 per person

**Group Tour Size:** 25 minimum, 90 maximum

**Reservations:** yes, required (8-week notice)

**Duration:** 60 min. minimum, 120 min. maximum

**Handicap Accessible:** no **Motorcoach Parking:** yes

**Restroom Facilities:** yes, limited

## Special Showing of "The Music Man"

Lights, camera, action! "The Music Man" video can be provided for your group to watch aboard the coach.

**Hours:** May- Sept. Mon.-Sun. 5pm-9pm

**Admission:** Ranges depending on menu; avg. \$5 - \$10 per person

**Group Tour Size:** 25 minimum, 90 maximum

**Reservations:** yes, required (8-week notice)

**Duration:** 180 min.

## Wine Sampling

Motorcoach groups are invited to take part in one of the most popular activities—wine sampling. Groups will enjoy a variety of different wines while learning and having fun. "Uncle Bruce", a local wine guru, will entertain your group in a private wine tasting area featuring a scenic painted mural of a winery. In addition, a variety of wines will be available for purchase with discounts offered. Groups may also select an off-site location of their choice.

**Hours:** Mon.-Sat. 3pm-9pm

**Admission:** On-site sampling \$3/person; minimum of \$125 /group or off-site sampling \$5/person; minimum of \$150/group

**Group Tour Size:** 25 minimum, 55 maximum

**Reservations:** yes, required (4-week notice)

**Duration:** 60 min. minimum, 120 min. maximum

**Handicap Accessible:** yes **Motorcoach Parking:** yes

**Restroom Facilities:** yes,

# SAMPLE ITINERARIES

## FRANK LLOYD WRIGHT ARCHITECTURAL TOUR : 1-DAY TOUR

### MORNING

The group will begin their day by enjoying an **Architectural Tour**, which features the vast architectural heritage in the community. The main emphasis of the presentation is the interior and exterior of the Frank Lloyd Wright and Prairie School style designed buildings in the community. The tour also includes the Rock Crest & Rock Glen area, the largest group of Prairie School designed homes on a unified site. Continue your quest to learn more about Frank Lloyd Wright while touring the **Frank Lloyd Wright Stockman House** and **Architectural Interpretive Center**. The Stockman House, constructed in 1908, is located adjacent to the Rock Glen - Rock Crest National Historical District. This home was the first and only Prairie School house designed in Iowa by Wright. The Architectural Interpretive Center, inspired by a Walter Burley Griffin design, helps tell the story of Wright and Prairie School architectural designs in the area.

### AFTERNOON

Take a break from the day's activities at one of the numerous restaurants in the area, which cater to every palate and pocketbook. After lunch, tour the **Historic Park Inn Hotel**. Built in 1910 for two Mason City attorneys, the Historic Park Inn Hotel and City National Bank building is the last remaining hotel in the world designed by Frank Lloyd Wright. This classic example of Prairie School Architecture has been completely restored to its original appearance serving as an exquisite hotel. Explore the restored public places of the hotel on a guided tour of the facility. Visit the mezzanine balcony overlooking the lobby and dining room, the Skylight Room with its fully restored sky-lit art glass ceiling, the Ladies Parlor with art-glass French Doors, the Gentlemen's Lounge and the Billiards Room and Mercury statues designed by Richard Bock.

## THE MUSIC MAN : 1-DAY TOUR

### MORNING

March to a fun beat while touring the **Charles H. MacNider Art Museum**, formerly a gracious 1920's Tudor revival home, which now houses a permanent collection of American art, including works by Regionalists Thomas Hart Benton and Grant Wood. Other highlights of the collection are post World War II paintings, contemporary prints, and works by Iowa artists. The museum also features the puppet collection of renowned puppeteer and Mason City native, Bil Baird, including his most famous puppets from the movie, "The Sound of Music". Meredith Willson memorabilia and history will be revealed during a tour of the **Kinney Pioneer Museum**. The facility also includes a pioneer village with a one-room schoolhouse, log cabin, blacksmith shop and demonstrations on weekends of pioneer crafts and trades.

### AFTERNOON

The lyrics - "76 Trombones led the big parade..." -- will get your group in the mood to uncover the story about Mason City's famous hometown son, Meredith Willson, author of "The Music Man". The group will tour the **Meredith Willson Boyhood Home** to learn more about the man behind the music. Next, enjoy a tour of **The Music Man Square**. The tour will highlight the Meredith Willson Museum and an old fashion 1912 streetscape replica of the movie set designs from the Warner Brothers motion picture. The group will also enjoy a tasty treat at the **Ice Cream Parlor** located along Music Man Square's beautiful indoor 1912 streetscape.

# SAMPLE ITINERARIES



## ■ AGRICULTURE TOUR : 2-DAY TOUR

### DAY ONE

As the hometown of Meredith Willson, composer of "The Music Man", Mason City is well-known for our appreciation of music. But did you know, that North Iowa is also known for wind power? *What!?!? Wind power in Iowa?* You bet! During your visit to the **Cerro Gordo Wind Farm**, your group will learn about the facility's effort to meet America's energy needs with clean, reliable and economical electricity generated in harmony with the environment. Mounted on 237-foot tall tubular towers, the wind turbines produce energy equivalent to electricity consumed by 30,000 typical Midwest homes. This unique self-guided tour will provide your group a sneak peek at how homes are powered by these "gentle giants". Next stop - **Central Gardens**. This 2.75 acre space is home to 22 theme gardens including Victorian, Wetland, Butterfly, Shade and more. The site also includes water features, terraces, a pavilion, and the Moongate Theatre Steps.

Recall the steam-powered threshing era with scores of antique farming equipment, agricultural implements and tools at the **Kinney Pioneer Museum**. In addition, the facility is home to a pioneer village including one-room schoolhouse, log cabin, and blacksmith shop. Live demonstrations of pioneer crafts and trades are available.

Explore the great outdoors with a walk through the primitive prairie and learn about various plant and wildlife species native to the area at **Lime Creek Nature Center**.

For more than 150 years, corn has been Iowa's top crop! In fact, Iowa has been the king of corn for almost two decades, producing more golden goodness than most countries! The majority of the corn grown in Iowa is used to make animal feed, as well as thousands of everyday products, including fuel! Learn about the production of ethanol - a renewable energy source - at one of our two local **ethanol plants**. Followed by a tour of the **North Iowa Area Community College's Farm Lab**, featuring an agronomic demonstration center showcasing transgenic crops, chemical demonstrations, specialty crops, global positioning systems, geographic information systems, yield mapping and monitoring, as well as swine and beef production facilities. Your tour will be customized to meet the interests of your group. Farm-to-table dining options are also available.

### DAY TWO

Visit the birthplace of the gasoline-driven tractor - Charles City, Iowa. Displays of locally manufactured, antique models of Hart-Parr, Oliver, and White can be seen at the **Floyd County Historical Museum**.

Tour the historic **Tyden Farm No. 6** and learn about Emil Tyden, a Swedish immigrant and mechanical genius holding 200 patents during his lifetime. Learn about modern-day manufacturing of grain bins and dryers, material handling equipment and pre-engineered metal buildings at **Sukup Manufacturing**, a family-owned, North Iowa company.

## ■ CARS, BOATS, TRAINS, RV'S – OH MY! : 2-DAY TOUR

### DAY ONE

The **Cannonball No. 457** is the first stop of the day where the group will learn about the last remaining Minneapolis & St. Louis Railway steam locomotive. Mason City is also home to the only remaining electric freight-hauling railroad in the entire United States. Running parallel to the Iowa Terminal electric railroad, guests can see this one of kind train in operation on almost any day of the week. Next, a wonderful tour of the **Kinney Pioneer Museum** where the group will relive the memories of days gone by. View the Colby Car, once manufactured in Mason City and the other cars and farm equipment of the past. Plus, demonstrations of pioneer crafts and trades including weaving, broom making and radio deejay.

Cruise over to Clear Lake and board the **Lady of the Lake**, a paddlewheel vessel perfect for an afternoon excursion. Save your appetite for a picnic style lunch served aboard the vessel.

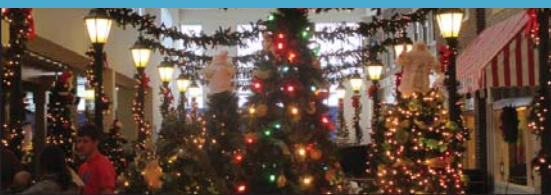
Check into the Mason City lodging property of your choice and prepare to be entertained by the **Mason City Community Theatre**. Another option would be to take in a production of the **North Iowa Performing Arts Series**. The entertainment lineup offers something for everyone including national touring productions featuring cultural dancing, award winning musicals, motivational speakers, and holiday events for the entire family.

### DAY TWO

First stop of the day will be at **Winnebago Industries** where the group will witness the production of recreational vehicles at the largest motor home production facility. What, wind power in Iowa? Your group will learn about the 55 wind turbines at the **Cerro Gordo Wind Farm**. These structures are mounted on 237-foot tall tubular towers. The facility represents a growing effort to meet America's energy needs with clean, reliable and economical electricity generated in harmony with the environment. The wind farms energy is equivalent to electricity consumed by 30,000 typical Midwest homes. This unique self guided tour will amaze your group as you discover how homes are powered by these "gentle giants".

The group will then uncover the story about Mason City's famous hometown son, Meredith Willson, author of "The Music Man". The group will tour the **Meredith Willson Boyhood Home** to learn more about the man behind the music. Next, enjoy **The Music Man Square** featuring replica set designs from "The Music Man" and the Meredith Willson Museum bursting with musical history, movie clips, instruments, memorabilia and great stories to tell. The group will also enjoy a tasty treat at the Ice Cream Parlor located along Music Man Square's beautiful indoor 1912 streetscape.





## ■ IT'S BEGINNING TO LOOK A LOT LIKE CHRISTMAS : 2-DAY HOLIDAY TOUR

### DAY ONE : MORNING

See the wonderful works of art that are featured at the **Charles H. MacNider Art Museum** including works with a holiday feel and vision. The group will also learn about Bil Baird, another famous, former Mason City resident and renowned puppeteer who has donated hundreds of his puppets to the museum. Baird's most famous puppets were featured in the movie "The Sound of Music", and are currently on display at the museum.

### DAY ONE : AFTERNOON

Did you know that Meredith Willson is the author of the popular holiday song "It's Beginning to Look a lot Like Christmas"? Uncover the unique story regarding how Meredith Willson created this wonderful song, as well as, many other popular songs and plays while touring the **Meredith Willson Boyhood Home** and **The Music Man Square**. Both facilities will be filled with holiday decorations and the warmth of the holiday season.

### DAY ONE : EVENING

Check into the hotel and take some time to relax. Then off we go to enjoy a scrumptious meal at one of the area restaurants with true River City entertainment, a **musical performance** featuring songs from "The Music Man" and other musical favorites including Willson's "It's Beginning to Look a lot Like Christmas" performed by local talent. Another option available would be to partake in one of the many holiday annual events including **Home for the Holidays** or **Clear Lake's Christmas By the Lake**. The group could also attend a performance of the North Iowa Performing Arts Series, the holiday options are endless! **Wine sampling** is also available.

### DAY TWO: MORNING

First stop of the day is an **Architectural Tour** of Mason City. The tour can be strictly a guided tour by motorcoach or can include a slide presentation of the architectural aspects in the Rock Glen and Rock Crest area, the largest grouping of Prairie School Architecture on a unified site. A great opportunity to view the Frank Lloyd Wright and Prairie School architectural designs in the community softly blanketed in the new fallen snow. What would the holidays be without shopping....next is a great chance to have some time to uncover those special treasures at the abundance of specialty shops and retail stores in Mason City. View the downtown map of retail stores all within walking distance.

### DAY TWO : AFTERNOON

A tour of the **Historic Park Inn Hotel** is the next stop. Built in 1910 for two Mason City attorneys, the Historic Park Inn Hotel and City National Bank building is the last remaining hotel in the world designed by Frank Lloyd Wright. This classic example of Prairie School Architecture has been completely restored to its original appearance serving as an exquisite hotel. Explore the restored public places of the hotel on a guided tour of the facility. Visit the mezzanine balcony overlooking the lobby and dining room, the Skylight Room with its fully restored sky-lit art glass ceiling, the Ladies Parlor with art-glass French Doors, the Gentlemen's Lounge and the Billiards Room and Mercury statues designed by Richard Bock. Next, relive the day the music died while touring the **Surf Ballroom & Museum**, the final concert site of Buddy Holly, Ritchie Valens and J.P. "The Big Bopper" Richardson.

## ■ MUSIC, MEMORIES, & WRIGHT HERE IN MASON CITY : 3-DAY TOUR

### DAY ONE : MORNING

Start the day with a wonderful tour of the last remaining Minneapolis & St. Louis Railway steam locomotive - the **Cannonball No. 457**. This unique locomotive has been restored to reflect its original appearance. Next, tour the **Charles H. MacNider Art Museum**, formerly a gracious 1920's Tudor revival home, which now houses a permanent collection of American art, including works by Regionalists Thomas Hart Benton and Grant Wood. Other highlights of the collection are post World War II paintings, contemporary prints, and works by Iowa artists. The museum also features the puppet collection of renowned puppeteer and Mason City native, Bil Baird, including his most famous puppets from the movie, "The Sound of Music".

### DAY ONE : AFTERNOON

The group will then uncover the story about Mason City's famous hometown son, Meredith Willson, author of "The Music Man". The group will tour the **Meredith Willson Boyhood Home** to learn more about the man behind the music. Next,

enjoy **The Music Man Square** featuring replica set designs from "The Music Man" plus the Meredith Willson Museum bursting with musical history, movie clips, instruments, memorabilia and great stories to tell. The group will also enjoy a tasty treat at the **Ice Cream Parlor** located along Music Man Square's beautiful indoor 1912 streetscape.

### DAY ONE : EVENING

Guests will check into a Mason City lodging facility of their choice and freshen up for evening activities. Get ready to enjoy an elegant evening in Mason City, the original "River City". The group will enjoy a delightful evening meal at one of the numerous restaurants in the community, with true River City entertainment, a **musical performance** featuring songs from "The Music Man" and other musical favorites performed by local talent. Another option, a **Musical Revue Theatre Performance** in which your group can delight in a performance featuring highly trained and talented high school aged performers. The

[ CONTINUED ON PAGE 16 ]

# SAMPLE ITINERARIES



## ■ MUSIC, MEMORIES, & WRIGHT HERE IN MASON CITY : 3-DAY TOUR *cont.*

[ CONTINUED FROM PAGE 15 ]

musical revues are designed to appeal to family and senior audiences with the production changing each September and running until the following August. The revue tours with its own colorful set, sound system and lights. Past shows include "The Andrews Sisters", "Smoke On the Mountain", "Oil City Symphony" and "Abby and the Absoluties".

### DAY TWO : MORNING

Mason City is also home to Prairie School Architecture with several buildings in the community designed by Frank Lloyd Wright including a residential home, a bank building and a hotel. Discover more about Frank Lloyd Wright and Mason City's architecture on an **Architectural Tour**. The tour can be strictly a guided tour by motorcoach or can include a slide presentation of the architectural aspects in the Rock Glen and Rock Crest area, the largest grouping of Prairie School Architecture on a unified site. Continue your quest to learn more about Frank Lloyd Wright while touring the **Frank Lloyd Wright Stockman House and Architectural Interpretive Center**. The Stockman House, constructed in 1908, is located adjacent to the Rock Glen - Rock Crest National Historical District. This home was the first and only Prairie School house designed in Iowa by Wright. The Architectural Interpretive Center, inspired by a Walter Burley Griffin design, helps tell the story of Wright and Prairie School architectural designs in the area.

### DAY TWO : AFTERNOON

Next tour the **Historic Park Inn Hotel**. Built in 1910 for two Mason City attorneys, the Historic Park Inn Hotel and City National Bank building is the last remaining hotel in the world designed by Frank Lloyd Wright. This classic example of Prairie School Architecture has been completely restored to its original appearance serving as an exquisite hotel. Explore the restored public places of the hotel on a guided tour of the facility. Visit the mezzanine balcony overlooking the lobby and dining room, the Skylight Room with its fully restored sky-lit art glass ceiling, the Ladies Parlor with art-glass French Doors, the Gentlemen's Lounge and the Billiards Room and Mercury statues designed by Richard Bock. Continue the day by taking a step back in time at the **Kinney Pioneer Museum** and relive the memories of days gone by. Experience life on the Iowa frontier through the vintage exhibits and living history, which includes a pioneer village, one-room schoolhouse, log cabin and blacksmith shop. Plus, demonstrations of pioneer crafts and trades including weaving, broom making and radio deejay. Next, relive the day

the music died while touring the **Surf Ballroom & Museum**, the final concert site of Buddy Holly, Ritchie Valens and J.P. "The Big Bopper" Richardson.

### DAY TWO : EVENING

Experience a breathtaking sunset over the lake during an evening excursion on a paddlewheel vessel, the **Lady of the Lake**. A perfect end to a delightful day.

### DAY THREE : MORNING

First stop of the day will be at **Winnebago Industries** where the group will witness the production of recreational vehicles at the largest motor home production facility. A tour of **Central Gardens** is the next stop of the day. This 2.75 acre space is home to 22 theme gardens including Victorian, Wetland, Butterfly, Shade and more. The site also includes water features, terraces, a pavilion, and the Moongate Theatre Steps.

### DAY THREE : AFTERNOON

The group will return to Mason City and spend some time on their own as they uncover those special treasures at the abundance of **specialty shops and retail stores** throughout our vibrant downtown. Another option, view the amazing sculptures that are a part of the **River City Sculptures on Parade** exhibit . This self guided tour features 25 outdoor sculptures in the downtown area. On the way home, enjoy "The Music Man" video aboard the coach.

DID YOU KNOW...

Mason City is home to the only remaining electric freight-hauling railroad in the United States. Visitors can see this one-of-a-kind train in operation on almost any day while traveling along 19th Street SW which runs parallel to the Iowa Terminal electric railroad.



## LOCATION KEY

D - Downtown | N - North | S - South | E - East | W - West



- Group Accommodations Available

### BAR/GRILL

**1910 Lounge (D)**  
*in the Historic Park Inn*  
641-422-0015

**Burke's Bar & Grill (N)**  
641-423-9610

**Homer's (S)**  
641-423-9830

**Kozy Korner (N)**  
641-424-7905

**Fat Hill Brewing (D)**  
641-423-0737

**FION Wine Bar (D)**  
641-529-7645

**LD's Filling Station  
Bar & Grill (N)**  
641-494-2313

**Lorados (D)**  
641-424-8060

**Mason City Brewing (D)**  
641-423-1080

**Mulligan's Bar & Grill (E)**  
641-422-9888

**Mystic Lanes (E)**  
641-423-4375

**Patrick's Sports  
Bar & Grill (S)**  
641-423-5721

**Ransom's (D)**  
641-424-7916

**Spike's Tap & Grill (S)**  
641-423-1189

**Sportman's Lounge (D)**  
641-423-3252

**Tailgaters (S)**  
641-424-1310

**The Place 2B (D)**  
641-423-9299

**The Quarry Tapas Bar (D)**  
641-421-0075

**Willow Run Lounge (W)**  
641-201-1916

### CASUAL DINING

**Applebee's (W)**  
641-424-0026

**Bill's Bar-B-Q (W)**  
641-424-4944

**Boulder Tap House (W)**  
641-201-8106

**Buffalo Wild Wings (W)**  
641-421-9464

**Butcher's Steakhouse (N)**  
641-423-1110

**Cook's Café (N)**  
641-201-1741

**Einstein Bros. Bagels (W)**  
641-201-1047

**Hy-Vee East (E)**  
641-424-9741

**Hy-Vee West (W)**  
641-424-2605

**Mason City Country Club (S)**  
641-424-3014

**Papa's American Café (W)**  
641-424-1593

**Perkins Restaurant (W)**  
641-423-2360

**Pies & More (W)**  
641-424-2166

**Pro's Sandwich Shop (S)**  
641-424-2662

**Rib Crib (W)**  
641-424-3794

**Ruby Tuesday (W)**  
641-424-9990

**The Decker House (D)**  
641-423-4700

**Suzie-Q-Café (D)**  
641-423-5021

**Them People  
at the Airport Café (W)**  
641-357-5225

**Village Court  
Family Restaurant (W)**  
641-424-5065

### COFFEE / SWEETS

**Aurora Borealis (S)**  
641-422-9902

**Beanzy's (D)**  
641-424-4377

**Birdsall's Ice Cream (D)**  
641-423-5365

**Borealis Station (E)**  
641-422-9901

**Cabin Coffee Co. (E)**  
641-423-6502

**Caribou Coffee (W)**  
641-201-1047

**Dairy Queen (W)**  
641-422-0174

**Grandma Sugar's  
Cupcakery (D)**  
641-423-0929

**Ice Cream Parlor (D)**  
*at The Music Man Square*  
641-424-2852

**JavaWorks (D)**   
641-423-0084

**Jitters (D)**  
641-424-4880

**Orange Leaf (W)**  
641-201-1760

**Pretzelmaker (D)**  
641-423-1998

**Starbucks (W)**  
*at Hy-Vee West*  
641-424-2605

**Starbucks (W)**  
641-596-0155

### DELI

**Hungry Mind (D)**  
641-423-0121

**Jimmy John's (W)**  
641-424-8004

**Pete's Kitchen (W)**  
641-423-2666

**Pita Pit (W)**  
641-424-3370

**State Street Deli (D)**  
641-201-1002

**Subway**  
641-423-6090 (D)  
641-423-3265 (E)  
641-424-8339 (W)  
641-421-0413 (W)  
641-424-6690 (W)

**Super Target (W)**  
641-423-8335

**Wal-Mart Supercenter (W)**  
641-423-6767

### FAST FOOD

**Arby's (W)**  
641-423-2264

**Burger King (W)**  
641-423-8540

**Culver's (W)**  
641-423-3565

**Hardee's (E)**  
641-424-5395

**Kentucky Fried Chicken (W)**  
641-424-1132

**McDonald's**  
641-423-6710 (S)  
641-423-0417 (W)

**Wendy's (S)**  
641-423-8037

### FINE DINING

**1910 Grille (D)**  
*in the Historic Park Inn*  
641-422-0015

**Northwestern  
Steak House (N)**  
641-423-5075

**Prime 'N Wine (W)**  
641-424-8153

**The Quarry (D)**  
641-421-0075

### ASIAN CUISINE

**China Buffet (W)**  
641-424-1100

**Hasey Asian Fast Food (D)**  
641-424-2457

**New City Buffet (W)**  
641-201-1767

**Panda Express (W)**

**Thai Bistro & Sushi (D)**  
641-201-8216

**Wok-n-Roll (D)**  
641-423-1558

### MEXICAN

**Cancun (W)**  
641-423-1807

**Carlos O'Kelly's (W)**  
641-423-9332

**Las Palmas (W)**  
641-424-3166

**Panchero's (W)**  
641-424-8070

**Pastime Gardens (W)**  
641-423-8896

**Plaza Mexico (S)**  
641-423-4900

**Taco Bell (W)**  
641-424-9403

**Taco John's (W)**  
641-423-8503

**Taco Tico (W)**  
641-423-6014

### PIZZA / ITALIAN

**Casey's General Store**  
641-424-4740 (N)  
641-424-8908 (N)  
641-424-5020 (W)  
641-421-1777 (S)  
641-424-3822 (S)

**Domino's Pizza  
Delivery (D)**  
641-423-2330

**Godfather's Pizza (E)**  
641-424-5133

**Little Ceasars (D)**  
641-423-5000

**Papa Murphy's (W)**  
641-424-3011

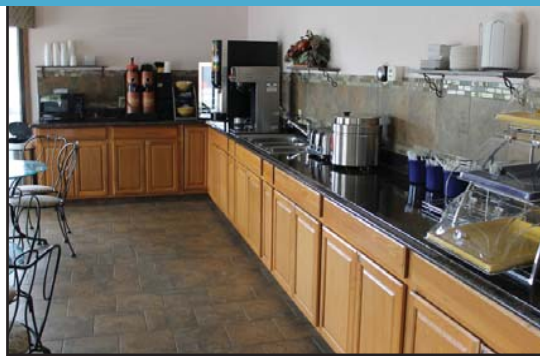
**Pasta Bella (S)**  
641-201-1891

**Pizza Hut (W)**  
641-423-1732

**Pizza Ranch (S)**  
641-423-3100

**CATERING INFORMATION  
LOCATED ON PAGE 7**

# LODGING ACCOMODATIONS



Wherever you may want to lay your head,  
*the comforts of home await you...*

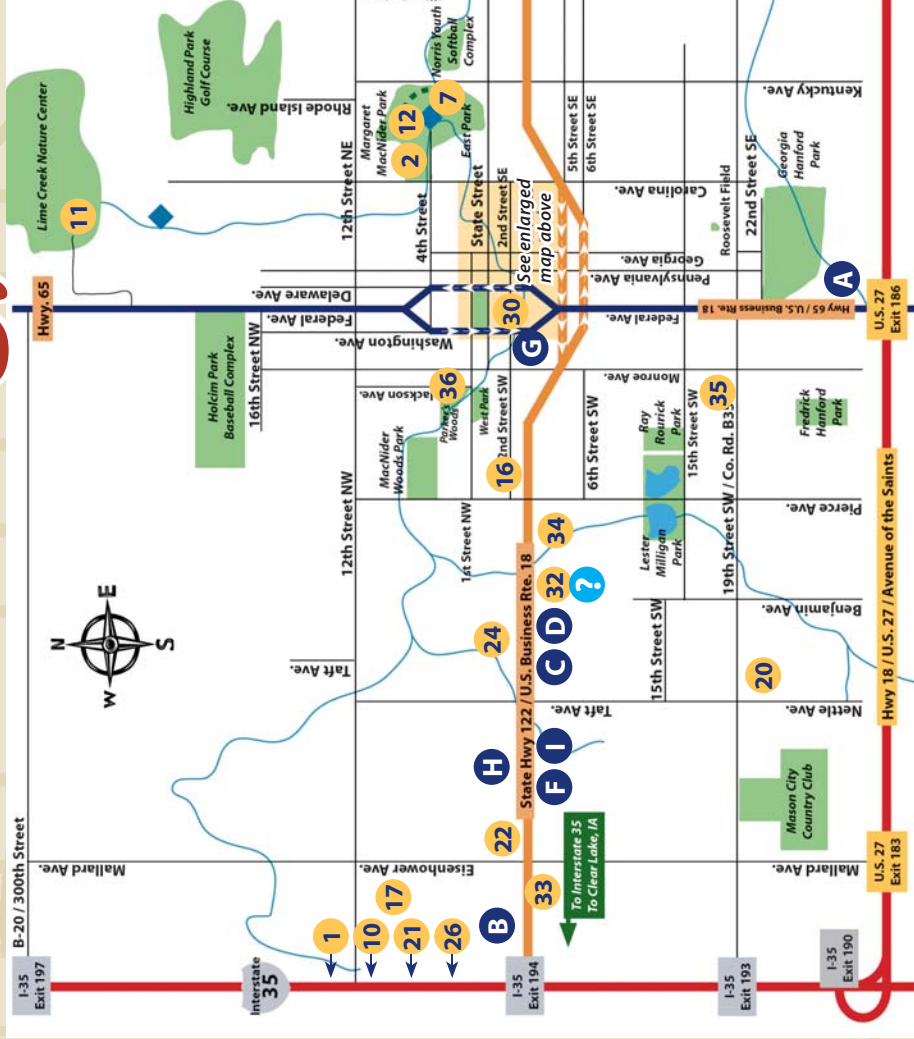
		Number of Rooms	Non-Smoking Rooms	Handicap Accessible	Complimentary Breakfast	Restaurant	Lounge	Courtesy Transportation	Pets	Recreation	Banquet Facilities	Meeting Rooms	Group Services	Internet Access	Special Features
<b>KEY</b>	<b>A Ashley Inn</b> 3451 S. Federal Avenue; Hwy. 65 S (641) 423-9471	16	4						•					•	CM MW RF
<b>Recreation</b>	<b>B Country Inn &amp; Suites</b> 4082 4th Street SW; Hwy. 122 W (641) 423-1770 • (800) 456-4000 www.countryinn.com	88	88	•	•					E, I W		•	L, G C, M	•	B, CM IB, K, LF MW, RF
E = Exercise Room	<b>C Days Inn</b> 2301 4th Street SW; Hwy. 122 W (641) 424-0210 • (800) 329-7466 www.daysinn.com	57	43	•	•				•				G C, M	•	B, CM IB, MW, RF
I = Indoor Pool	<b>D Hampton Inn &amp; Suites</b> 2111 4th Street SW; Hwy. 122 W (641) 425-7500 • (800) 426-7866 www.hamptoninn.com	83	83	•	•					E, I W			G C, M	•	B, CM IB, MW, RF
O = Outdoor Pool	<b>E Historic Park Inn</b> 15 West State Street (641) 422-0015 • (800) 659-2220 www.historicparkinn.com	27	27	•		•	•	•		E	•	•	L, G, M	•	B, CM IB, RF
R = Recreation Room	<b>F Holiday Inn Express &amp; Suites</b> 3041 4th Street SW; Hwy. 122 W (641) 424-1200 • (800) 465-4329 www.hiexpress.com	87	87	•	•					E, I		•	L, G M	•	B, CM IB, K, LF MW, RF
W = Whirlpool	<b>G Quality Inn &amp; Suites</b> 410 5th Street SW; Hwy. 122 W (641) 423-4444 • (877) 424-6423 www.qualityinn.com/hotel/ia030	60	60	•	•				•				G C, M	•	B, CM IB, MW, RF
<b>Group Tour Services</b>	<b>H Super 8 - Mason City</b> 3010 4th Street SW; Hwy. 122 W (641) 423-8855 • (800) 800-8000 www.super8.com	57	46	•	•				•	I, W			G M	•	B, CM LF, MW, RF
L = Luggage Handling	<b>I Willow Inn</b> 2781 4th Street SW; Hwy. 122 W (641) 423-8221	14	12				•		•						K, LF MW, RF
G = Group Rates	<b>J The Decker House B&amp;B</b> 119 2nd Street SE (641) 423-4700 www.thedeckerhousemc.com	5	5	•	•						•	•	G, L M, C	•	B
C = Escort & Driver Comp. Policy															
M = Motorcoach Parking															
<b>Special Features</b>															
B = Blow Dryer															
CM = Coffee Maker															
IB = Iron/Board															
K = Kitchenettes															
LF = Laundry Facilities															
MW = Microwave															
RF = Refrigerator															

All information was correct at date of printing and is subject to change.  
For your convenience, please call to confirm before traveling.



# MAPS OF

# Mason City, Iowa



## ENLARGED DOWNTOWN MAP



**S** River City Sculptures on Parade  
**○ ○ ○** Prairie School / Historical Architectural Walking Tour

## LODGING

- A. Ashley Inn
- B. Country Inn & Suites
- C. Days Inn
- D. Hampton Inn
- E. Historic Park Inn
- F. Holiday Inn Express & Suites
- G. Quality Inn & Suites
- H. Super 8 - Mason City
- I. Willow Inn
- J. The Decker House B&B

## AREAS OF INTEREST

- 1. Airport
- 2. Aquatic Center
- 3. Central Park
- 4. Cerro Gordo County Courthouse
- 5. Charles H. MacNider Art Museum
- 6. City Hall
- 7. East Park
- 8. Frank Lloyd Wright Hotel/Bank
- 9. Frank Lloyd Wright Stockman House
- 10. Kinney Pioneer Museum
- 11. Lime Creek Nature Center
- 12. Margaret MacNider Campground
- 13. Mason City Chamber of Commerce  
North Iowa Corridor EDC  
Main Street Mason City
- 14. Mason City Community Theatre
- 15. Mason City High School
- 16. Mercy Medical Center
- 17. Mercy Medical Center - West Campus
- 18. Meredith Willson Boyhood Home
- 19. Meredith Willson / "The Music Man" Footbridge
- 20. Newman High School

- 21. North Iowa Golf Center
- 22. North Iowa Events Center / Ice Arena  
Mason City Motor Speedway
- 23. North Iowa Area Community College
- 24. Plaza West Strip Mall
- 25. Post Office
- 26. Prairie West Plaza
- 27. Public Library
- 28. Rancho Deluxe: The Original Bicycle Garden
- 29. Regency Square Strip Mall
- 30. Downtown / Southbridge Mall
- 31. The Music Man Square
- 32. Visitor Information Center
- 33. Willow Creek Crossing / Indianhead Square
- 34. Willowbrook Mall
- 35. YMCA
- 36. Roller City



Produced by Visit Mason City - Map not to scale.

# MEMORABLE MOMENTS AWAIT



*In addition to the outstanding attractions, the area offers a variety of unique events. Below is a partial list of exciting events you will want to keep in mind as you plan your convention, meeting or motorcoach tour.*

## Winter Dance Party

Rock 'n Roll tribute to Buddy Holly, Richie Valens and J.P. "The Big Bopper" Richardson. Held annually at the historic Surf Ballroom.

## Color the Wind Kite Festival

The largest winter kite festival in the Midwest. Colorful kite collections, unique ground displays, and choreographed kite dances. Held annually on Clear Lake.

## North Iowa Band Festival

Annual music festival and largest free marching band competition in the Midwest. Held in the heart of downtown Mason City.

## River City Chorus Spring Show

The River City Chorus is a member chorus of The Barbershop Harmony Society. This annual show features performances by the full 70+ member chorus as well as chorus quartets.

## Greek Festival

Enjoy a taste of Greece. This celebration features the best of Greek food, music, dancing and culture.

## Up In Smoke BBQ Bash

Weekend festival features delicious barbecue and live music in Mason City's beautiful East Park.

## Civil War Reenactment

History comes to life—witness the life of a soldier during the battle reenactments and live encampments.

## The Great River City Festival

This weekend of fun includes great food, brews, live music, art, and reenactments of John Dillinger's 1934 robbery of the First National Bank in Mason City.

## Tuba Christmas

Tuba and euphonium players come together to perform songs of the season.

## It's Beginning To Look A Lot Like Christmas

In celebration of the holiday season, the Music Man Square transforms into a winter wonderland and celebrates the sounds of the season, including Meredith Willson's holiday classic - "It's Beginning to Look a lot Like Christmas."

## Christmas by the Lake

A North Iowa tradition! This award-winning festival includes Trolley Rides, Horse Drawn Carriage Rides, Christmas Karaoke, S'mores, Strolling Dickens Characters, a Lighted Christmas Parade, spectacular fireworks at the seawall and much more!

For a complete listing of community events, visit our online calendar at [www.VisitMasonCityIowa.com](http://www.VisitMasonCityIowa.com).



## VISIT MASON CITY

2021 4th Street SW Mason City, IA 50401

641-422-1663 | 800-423-5724

[cvb@VisitMasonCityIowa.com](mailto:cvb@VisitMasonCityIowa.com)

PROUD MEMBER OF:



Information was correct at date of printing (January 2017) and is subject to change.  
For your convenience, please call to confirm before traveling.

Visit Us Online at [www.VisitMasonCityIowa.com](http://www.VisitMasonCityIowa.com)